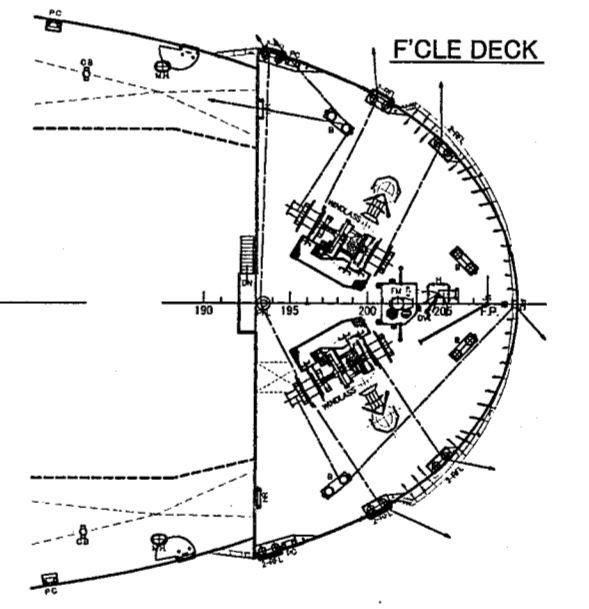
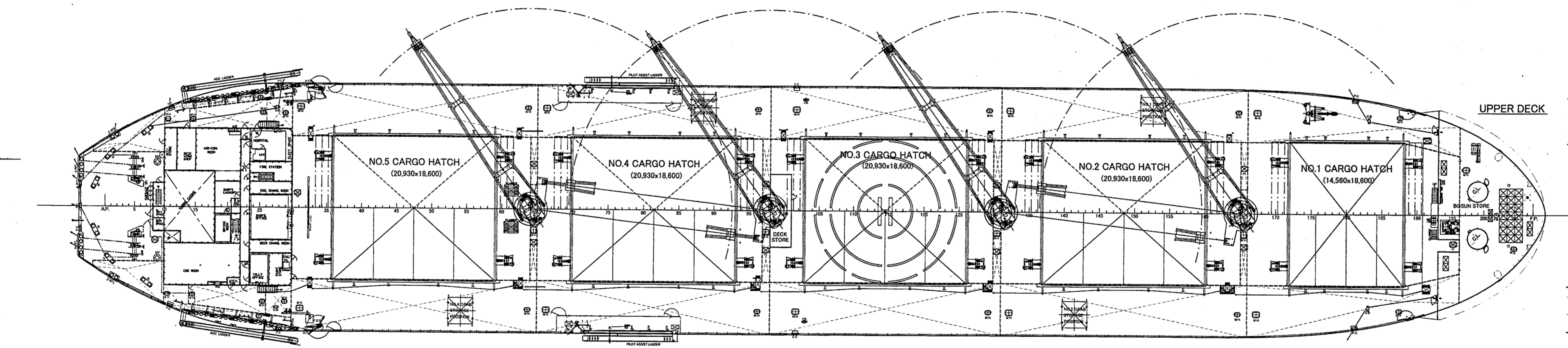
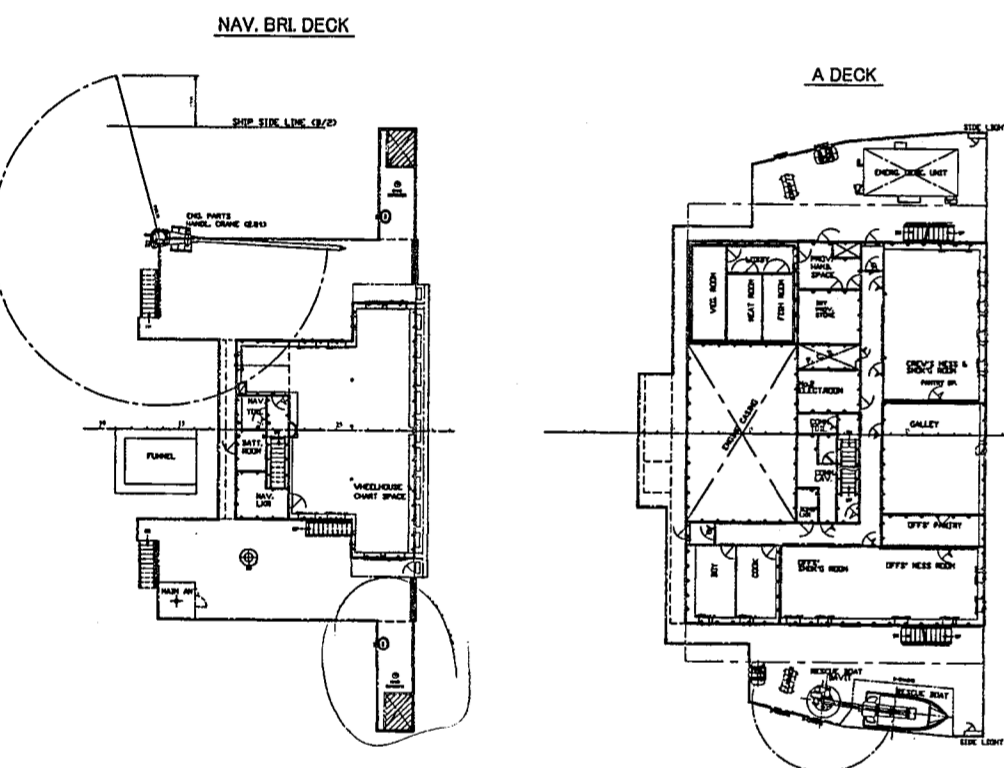
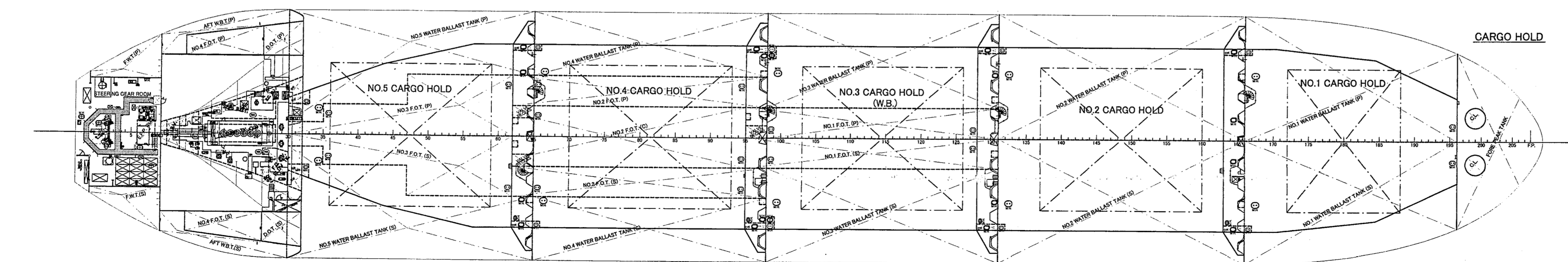
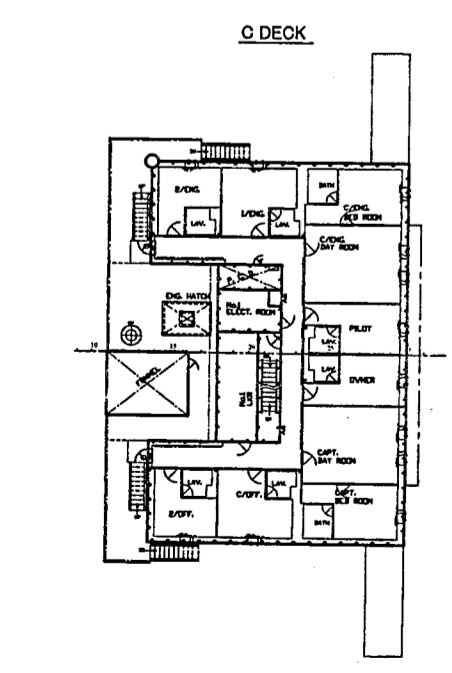


FRONT VIEW & MIDSHIP SECTION



COMPLEMENT

RANK	DECK	ENGINE	OTHER	SUM	
HIGHER OFFICER	CAPTAIN	1	C/ENGINEER	1	2
OFFICER	O/OFFICER	1	1/ENGINEER	1	2
JUNIOR OFFICER	2/OFFICER	1	2/ENGINEER	1	2
OFFICER	3/OFFICER	1	3/ENGINEER	1	2
SUM					6
SEMPERNALES	PRITTY OFFICER	4	4	1	9
SEMPERNALES	BOATSWAIN	2	2	1	5
SEMPERNALES	Q/MASTER	2	2	1	5
RATING	SAILOR	2	WPER	2	4
SUM					11
TOTAL ON BOARD					23 PERSONS



PRINCIPAL PARTICULARS

LENGTH (OVER ALL) (INCLUDE HALF ROUND BAR 30mm)	190.005
LENGTH (P.P.)	185.001
BREADTH (M.L.D.)	30.000
DEPTH (M.L.D.)	18.000
DRAFT (EXT.) ASSIGNED SUMMER	12.000
GROSS TONNAGE	31,538.1
DEADWEIGHT AT ASSIGNED DRAFT	55,783.1
MAIN ENGINE	DU-WARTSILA
OUTPUT	MCR 7,910 kW x 108.0 rpm
PROPELLER	NOR 8,809 kW x 108.0 rpm
DIAMETER	4.000
PITCH (Q.7R)	4.000
NUMBER OF BLADES	5
DESIGN POINT	8,725 kW x 100.4 x 1,055 rpm

CAUTION
THIS DOCUMENT CONTAINS CONFIDENTIAL AND PROPRIETARY INFORMATION OF JAPAN MARINE UNITED CORPORATION (JMU). THE DOCUMENT ALWAYS REQUIRES PRIOR WRITTEN CONSENT OF JMU FOR COPIES REPRODUCTION BY ANY MEANS, OR COPIES DISCLOSURE TO A THIRD PARTY, OR COPIES USE FOR ANY PURPOSE OTHER THAN THOSE FOR WHICH IT IS SUPPLIED.

IMO Number : 9663355

FINISHED PLAN

DATE	15 MAY 2014	PROJECT	Prepared for finished plan of SNo.2344
SCALE	1/400	DESIGNER	SHIMIZU
3RD ANGLE PROJECTION		CHECKER	SHIMIZU
JMU	Japan Marine United Corporation Kure Branch Daitoku-Daigaku (EX-G)	JOB NO.	201-2344
		CLASS	NK
		DATE	1/1